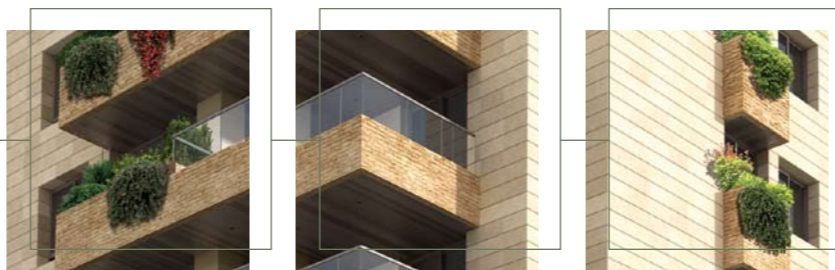




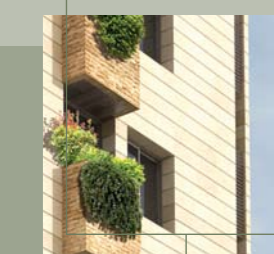
## SPECIFICATIONS

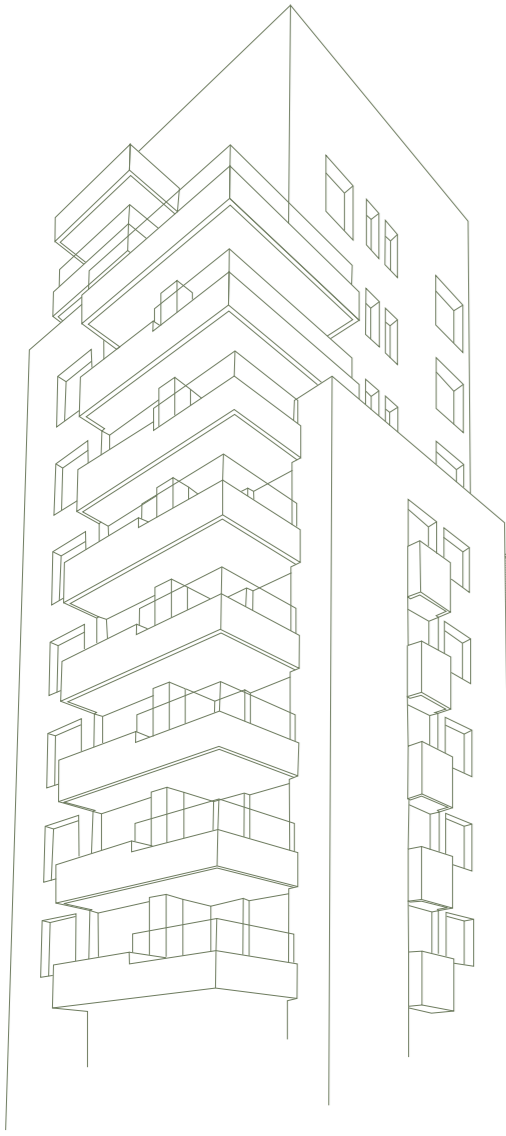
- Water well with water filtration.
- Emergency standby generator.
- Earthquake seismic structural design.
- Elevator Otis, Schindler or similar with a luxurious cabin finish.  
Suitable landscaping and driveway finishes.
- Marble stone cladding for the main entrance lobby.
- Security gates with remote control operation.
- Technal standard profile or equivalent with double glazing glass for exterior doors and windows.
- Kitchens OAK Veneered cabinets or equivalent with granite top and splashback.
- Video phone for apartments, guard, and main entrance.
- Lightning protection-for direct and indirect strikes.
- All water supply pipes in polypropylene (PPR) of German origin.
- External double walls.
- Motorized rolling shutters for reception areas.
- Marble flooring for living and dining areas and bedroom floors.
- Imported ceramic tiles for kitchens and family bathrooms.

**SURFACES:** 175 m<sup>2</sup> to 250 m<sup>2</sup>



- Imported sanitary fixtures from Ideal Standard/Keramag or equivalent.
- Sanitary fittings from Grohe / Ideal Standard or equivalent.
- Ductable concealed split units for reception and dining area.
- Decorative silent type split units for each bedroom.
- Independent water heater for each apartment.
- Electrical devices by Bticino, Legrand, or equivalent.
- Merlin Gerin or ABB or equivalent panel boards.
- Main Entrance doors in solid wood.
- Parking Space for each apartment.
- Store Room for each Apartment.
- Each Floor consists of one Apartment.



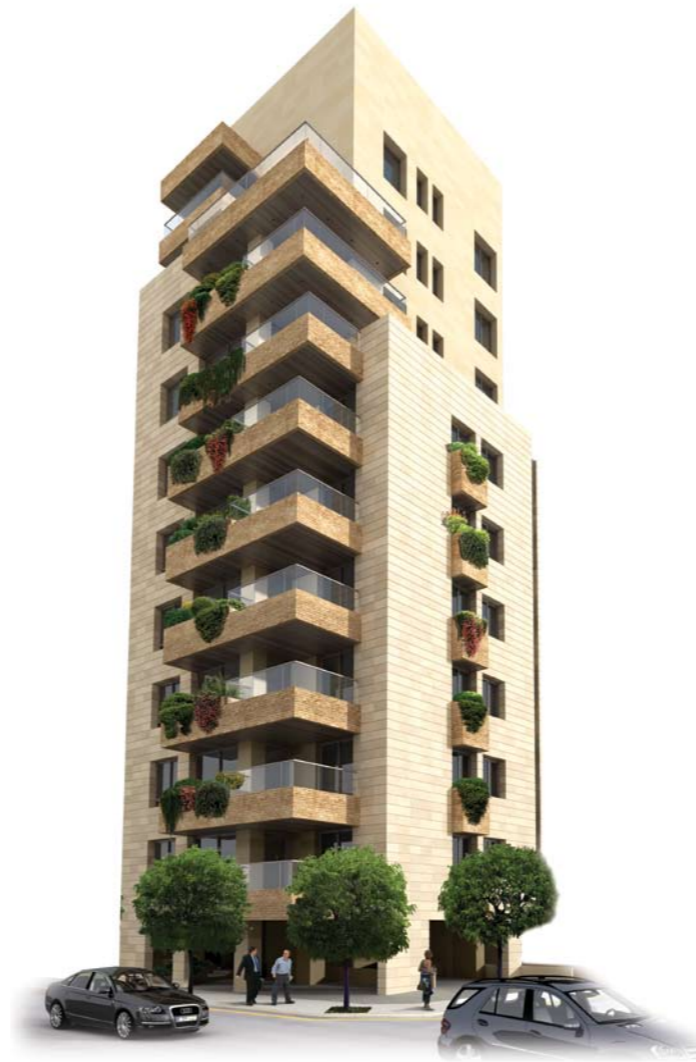
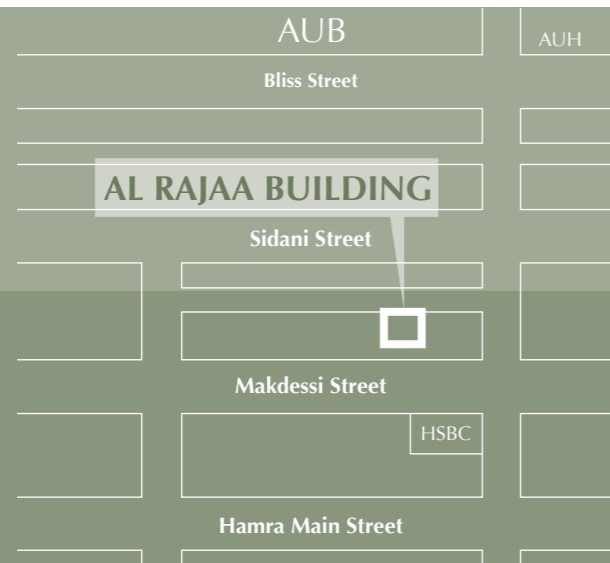


## LOCATION

*Al Rajaa Building* lies in the heart of Ras Beirut residential neighborhood and within walking distance from Hamra main street, AUB and AUH.

The location of the building offers itself as a home haven for AUB scholars, AUH doctors and private clinic owners in the neighborhood.

With homes ranging from 175 to 250 square meters, all with parking spaces, **Al Rajaa Building** in Hamra combines elegance and luxury with the dynamic practicality of living in the center of the capital.



AL RAJAA BUILDING  
RAS BEIRUT  
Beirut - Lebanon

DEVELOPER



Tel. +961 1 808 292 /3  
Cell. +961 3 558 458  
Fax. +961 1 786 279

ARCHITECT

SARKIS AZADIAN

CONSULTING & MANAGEMENT



AFAK GENERAL CONTRACTORS



# AL RAJAA BUILDING